



## De Hekserij

De Hekserij  
Sporstraat 57  
8271 RG IJsselmuiden  
The Netherlands

## 23077 - Aldehyde C16 strawberry

1Doc: All available data that is not in the SDS and that is not batch specific.  
Version 2 | 2026-04-01

### Identity

Product : Aldehyde C16 strawberry [Aldehyde C16 aardbei]  
Code : 23077  
INCI name : ETHYL METHYLPHENYLGLYCIDATE  
EC number : 201-061-8  
CAS number EU : 77-83-8  
CAS number TSCA : 77-83-8  
FEMA number : 2444

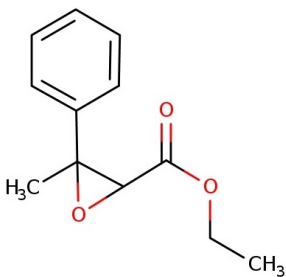
### Customs information

HS code : 2918 9990  
Country of origin : China

### Identity check

Appearance at RT : Clear liquid  
Colour : Light yellow  
Odour : Fruity, Strawberry, Floral  
Refractive index (20°C) : 1,504 - 1,513  
Specific gravity (20°C) : 1,084 g/cm<sup>3</sup> - 1,114 g/cm<sup>3</sup>

### Chemical formulation



### Additives

Antioxidants : None  
Chelators : None  
Solvents : None

### Production / origin

Chemical synthesis.

### Composition

**Physiochemical specification**

Solubility in water	: 1 g/l at 20 °C
Log Pow	: 2,4
Vapour pressure	: 0,23 Pa
Melting point	: < -50 °C
Boiling point	: 301,85 °C

**Use and storage**

Suitable in fragrance compositions for cosmetics, cleaning products and other fragranced products.  
 We do not sell products for use in oral care products, food, feed, tobacco, e-smoking or pharmaceuticals.  
 Keep dark and dry in a closed container. Hazardous (REACH/CLP), SDS available on request.

**Allergens, EU Cosmetics Regulation**

This product contains the following fragrance allergens as specified in the EU Cosmetics Regulation:  
 Fragrance ingredients restricted as potential allergens in the extended list amending ANNEX III of EUROPEAN COSMETIC REGULATION (EC) No1223/2009

**\*Total % in Perfume Compound determined by calculation (Direct add and Indirect from naturals/synthetics)**

Ingredient Name	Cas Number(s)	%*
3-PROPYLIDENEPHTHALIDE	: 17369-59-4	: -
6-METHYL COUMARIN	: 92-48-8	: -
ACETYLCEDRENE	: 32388-55-9	: -
ALPHA-ISOMETHYL IONONE	: 127-51-5	: -
ALPHA-TERPINENE	: 99-86-5	: -
AMYL CINNAMAL	: 122-40-7	: -
AMYL SALICYLATE	: 2050-08-0	: -
AMYLCINNAMYL ALCOHOL	: 101-85-9	: -
ANETHOLE	: 104-46-1 4180-23-8	: -
ANISE ALCOHOL	: 105-13-5	: -
BENZALDEHYDE	: 100-52-7	: -
BENZYL ALCOHOL	: 100-51-6	: -
BENZYL BENZOATE	: 120-51-4	: -
BENZYL CINNAMATE	: 103-41-3	: -
BENZYL SALICYLATE	: 118-58-1	: -
BETA-CARYOPHYLLENE	: 87-44-5	: -
CAMPHOR	: 76-22-2 21368-68-3 464-49-3 464-48-2	: -
CANANGA ODORATA FLOWER EXTRACTS	: 83863-30-3 8006-81-3 68606-83-7 93686-30-7	: -
CARVONE	: 99-49-0 6485-40-1 2244-16-8	: -
CEDRUS ATLANTICA BARK/LEAF/WOOD EXTRACTS	: 8023-85-6 92201-55-3	: -
CINNAMAL	: 104-55-2	: -
CINNAMOMUM CASSIA LEAF OIL	: 8007-80-5 84961-46-6	: -
CINNAMOMUM ZEYLANICUM BARK OIL	: 8015-91-6 84649-98-9	: -
CINNAMYL ALCOHOL	: 104-54-1	: -
CITRAL	: 5392-40-5 141-27-5 106-26-3	: -
CITRONELLOL	: 106-22-9 26489-01-0 1117-61-9 7540-51-4	: -

CITRUS AURANTIUM BERGAMIA PEEL OIL	:	8007-75-8	89957-91-5 85049-52-1	68648-33-9	: -
CITRUS AURANTIUM FLOWER OIL	:	72968-50-4	8028-48-6	8016-38-4	: -
CITRUS AURANTIUM PEEL OIL	:	68916-04-1 8028-48-6	72968-50-4 8008-57-9	97766-30-8	: -
CITRUS LIMON PEEL OIL	:	84929-31-7	8008-56-8		: -
COUMARIN	:	91-64-5			: -
DIMETHYL PHENYL ACETATE	:	151-05-3			: -
EUCALYPTUS GLOBULUS OIL	:	97926-40-4	8000-48-4		: -
EUGENIA CARYOPHYLLUS OIL	:	8000-34-8	8015-97-2	84961-50-2	: -
EUGENOL	:	97-53-0			: -
EUGENYL ACETATE	:	93-28-7			: -
EVERNIA FURFURACEA (TREEMOSS) EXTRACT	:	90028-67-4			: -
EVERNIA PRUNASTRI (OAKMOSS) EXTRACT	:	90028-68-5			: -
FARNESOL	:	4602-84-0			: -
GERANIOL	:	106-24-1			: -
GERANYL ACETATE	:	105-87-3			: -
HEXADECANOLACTONE	:	109-29-5			: -
HEXAMETHYLINDANOPYRAN (GALAXOLIDE)	:	1222-05-5			: -
HEXYL CINNAMAL	:	101-86-0			: -
HYDROXYCITRONELLAL	:	107-75-5			: -
ISOEUGENOL	:	97-54-1	5932-68-3	5912-86-7	: -
ISOEUGENYL ACETATE	:	93-29-8			: -
JASMINE OIL/EXTRACT (GRANDIFLORUM / OFFICINALE)	:	84776-64-7	90045-94-6 8024-43-9	8022-96-6	: -
JUNIPERUS VIRGINIANA OIL	:	8000-27-9	85085-41-2		: -
LAURUS NOBILIS LEAF OIL	:	8002-41-3	8007-48-5	84603-73-6	: -
LAVANDULA OIL/ EXTRACT	:	91722-69-9 93455-97-1 8000-28-0	8022-15-9 92623-76-2 90063-37-9	93455-96-0 84776-65-8	: -
LEMONGRASS OIL	:	8007-02-1	89998-16-3	91844-92-7	: -
LIMONENE	:	138-86-3	7705-14-8 5989-54-8	5989-27-5	: -
LINALOOL	:	78-70-6			: -
LINALYL ACETATE	:	115-95-7			: -
LIPPIA CITRIODORA ABSOLUTE (VERBENA ABSOLUTE)	:	8024-12-2	85116-63-8		: -
MENTHA PIPERITA OIL	:	8006-90-4	84082-70-2		: -
MENTHA VIRIDIS LEAF OIL	:	8008-79-5	84696-51-5		: -
MENTHOL	:	89-78-1	1490-04-6 15356-60-2	2216-51-5	: -
METHYL 2-OCTYNOATE	:	111-12-6			: -
METHYL SALICYLATE	:	119-36-8			: -
MYROXYLON PEREIRAE OIL/ EXTRACT (PERU BALSAM)	:	8007-00-9			: -
NARCISSUS EXTRACT	:	90064-26-9	68917-12-4 90064-25-8	90064-27-0	: -
PELARGONIUM GRAVEOLENS FLOWER OIL	:	90082-51-2	8000-46-2		: -
PINENE	:	80-56-8 18172-67-3	7785-70-8	127-91-3	: -
PINUS MUGO	:	90082-72-7			: -
PINUS PUMILA	:	97676-05-6			: -
POGOSTEMON CABLIN OIL	:	8014-09-3	84238-39-1		: -
ROSE FLOWER OIL/EXTRACT	:	8007-01-0 84696-47-9	90106-38-0 84604-12-6 92347-25-6	93334-48-6 84604-13-7	: -
ROSE KETONES	:	43052-87-5 23696-85-7 23726-92-3	23726-94-5 57378-68-4 23726-91-2	24720-09-0 71048-82-3	: -

SALICYLALDEHYDE	:	90-02-8			:	-
SANTALOL	:	11031-45-1	115-71-9	77-42-9	:	-
SANTALUM ALBUM OIL	:	8006-87-9	84787-70-2		:	-
SCLAREOL	:	515-03-7			:	-
TERPINEOL	:	8000-41-7	98-55-5	138-87-4	:	-
			586-81-2			
TERPINOLENE	:	586-62-9			:	-
TETRAMETHYLACETYLOCTAHYDRO NAPHTHALENES (OTNE)	:	54464-57-2	54464-59-4	68155-66-8	:	-
			68155-67-9			
TRIMETHYLBENZENEPROPANOL	:	103694-68-4			:	-
TRIMETHYLCYCLOPENTENE METHYL PENTENOL	:	67801-20-1			:	-
TURPENTINE	:	9005-90-7	8006-64-2	8052-14-0	:	-
VANILLIN	:	121-33-5			:	-

These values are the typical maximum values, in rare cases these values can be higher.

Besides the obligation to list the allergens on the label in case these exceed a certain level there are no restrictions of use.

## IFRA QRE

According to the IFRA standard (51th Amendment) this product is restricted in use. The following limits apply (calculated for the finished product):

IFRA Class	Maximum use level
1 Products applied to the lips.	: 0,0 %
2 Products applied to the axillae.	: 100 %
3 Products applied to the face/body using fingertips.	: 100 %
4 Products related to fine fragrances.	: 100 %
5A Products applied to the body using the hands (palms), primarily leave-on (Body lotion).	: 100 %
5B Products applied to the face using the hands (palms), primarily leave-on (Face moisturizer).	: 100 %
5C Products applied to the hands using the hands (palms), primarily leave-on (Hand cream).	: 100 %
5D Products applied to babies using the hands (palms), primarily leave-on (Baby cream, oil, talc).	: 100 %
6 Products with oral and lip exposure.	: 0,0 %
7A Rinse-off products applied to the hair with some hand contact.	: 100 %
7B Leave-on products applied to the hair with some hand contact.	: 100 %
8 Products with significant anogenital exposure (tampon).	: 100 %
9 Products with body and hand exposure, primarily rinse off.	: 100 %
10A Household products.	: 100 %
10B Household care products with mostly hand contact (household aerosol/spray products).	: 100 %
11A Products with intended skin contact but minimal transfer of fragrance to skin from inert substrate without UV exposure.	: 100 %
11B Products with intended skin contact but minimal transfer of fragrance to skin from inert substrate with potential UV exposure.	: 100 %
12 Other air care products not intended for direct skin contact, minimal or insignificant transfer to skin.	: 100 %

Please note that we advise using lower amounts of this material in specific cases. This can be based on the fact that certain applications should only contain a small amount of fragrance anyway, independent of the risks of the

material itself.

#### **IFRA - Limitations**

This product does not contain substances that are listed in the IFRA standards (51th Amendment).

#### **Natural**

This product is not a natural aromatic raw material according to ISO 9235. The material is synthetic.

This product does not contain animal derived products, and can therefore be considered vegan.

Natural Index (acc. to ISO 16128) NI= 0

Natural Origin Index (acc. to ISO 16128) NOI= 0

Organic Index (acc. to ISO 16128) OI= 0

#### **Animal testing**

This raw material is in compliance with article 18 of the Cosmetics regulation (EC) No 1223/2009.

#### **Disclaimer**

All information in this document is to our best knowledge at the time of preparation, provided in good faith and believed to be accurate. It still may contain errors and may be incomplete.