



# HEKSERIJ FRAGRANCE CLASSIFICATION

We have designed a fragrance classification to help you find your way through all the different fragrance materials that De Hekserij sells. We have divided scents into groups and added the fragrance materials that go with them. Each group has a 3-digit number, the first for the main group (flowers for example), the second for the sub-group (red flowers) and the third for the sub-sub-group (roses).

For example, if you are looking for a resin wood scent, you can browse to group 343 and see the fragrance materials that fit that description. And vice versa: if you like Bacdanol and want to know which fragrances are similar? Look up Bacdanol (group 350) and see what other options we have.

No classification is perfect, we will regularly tinker with it in the future.

## 1 FLOWERS

100



### Flowers

The scent of flowers and blossoms.

110



### Red flowers

The scent of flowers such as rose, violet and geranium.

111



### Roses

The scent of roses.

FO Rose and lily, FO French rose, Rose absolute, Phenyl ethyl alcohol, Phenylethyl acetate, Dorinia SA E (Fir), Neryl acetate, Nerol, Rosa Hex 2 base, Rhodinol ex Citronella, Rosalin (Rose crystals), DMBC, Rosaphen (Sym)

112



### Violet

The scent of violets and orris.

CO2 Orris root, Isoraldeine 95 (Giv) Methyl ionone, Ionone alpha, Ionone beta, Orris root ground Phenyl propyl alcohol, Irone alpha, alpha Isomethyl ionone, Hexalon (IFF), Koavone (IFF),

113



### Warm and green

The scent of geranium and zdravets.

EO Palmarosa (org), EO Geranium Egypt, Citronello, Geraniol, Geranyl acetate, Citronellyl Formate



# 1 FLOWERS

120



## White flowers

The scent of flowers such as jasmine, orange blossom, gardenia and magnolia.

121



## Jasmine

The scent of jasmine.



EO Ylang ylang III (org), EO Ylang ylang complete (org), FO Farmers jasmin 2, Jasmin absolute, Benzyl acetate, Benzyl alcohol, Hedione (Fir), Benzylbenzoate, Dihydrojasmane, Amyl cinnamal, Benzyl propionate, Hexyl cinnamal, Hedione HC (Fir), Jasmin Hex 1 base

122



## Orange blossom

The scent of orange blossom and other citrus blossoms.



EO Petitgrain Paraguay, EO Neroli (org), Methyl anthranilate, Oranger Crystals, Auralva (IFF) aurantiol, Nerolidol, Aurantiol 50% in DPG, Orange Flower Ether (IFF)

123



## Gardenia

The scent of gardenia.



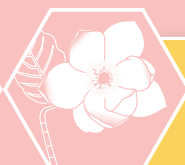
Styrallyl acetate

124



## Magnolia

The scent of magnolia.



Magnolan (Sym)

130



## Green flowers

The scent of flowers such as lily of the valley, lavender and hyacinth.

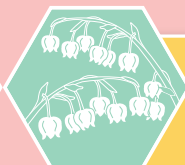


131



## Fresh green flowers

The scent of lily of the valley and reseda.

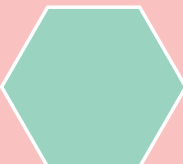


FO May bells, Hydroxycitronellal, Lyril (IFF), Cyclamen aldehyde, Majantol (Sym), Mayol (Fir), Florosa (Giv), Florhydral (Giv), Bourgeonal (Giv), Lilyflore (Fir)



# 1 FLOWERS

132

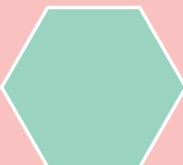


## Aromatic

The scent of lavender and lavandin.

EO Lavender Bulgaria (org), EO Ho wood (org), EO Lavandin Abrialis, FO Alpine lavender, Liffarome (IFF), Lavender absolute, Lavandin absolute, Linalool, Linalyl acetate, Ethyl linalool, DMBC butyrate, cis-3-Hexenyl salicylate

133



## Hyacinth

The scent of green bulbous plants.

Cinnamic alcohol, PADMA, Hyacinth body No. 3 (IFF)

140



## Spicy flowers

The scent of flowers such as carnation, lilac and tuberose.

141



## Sweet spicy flowers

The scent of carnation and wallflower.

FO Carnation, Azarbre (Giv)

142

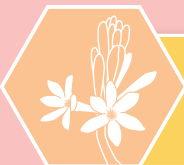


## Anisic flowers

The scent of acacia, hawthorn and lilac.

Mimosa absolute, Cassie absolute, Styrax resinoid LS, Anisaldehyde, Acetophenone, Lindenol (IFF), Methyl Acetophenone, Farnesol, Acetanisole, para Anisylacetate

143



## Tuberose

The scent of tuberose.

EO Wintergreen (org), Methyl benzoate

144



## Dry flowers

The scent of clover and orchid.

Amyl salicylate, Isobutyl Salicylate



## 2 FRUITS

200



### Fruits

The scent of fruit and some other sweet scents.

210



### Hard fruits

The scent of fruits such as apples, pear.

Isoamyl Isovalerate, Fructose (IFF), Hexyl acetate, Ethyl acetoacetate, alpha Damascone

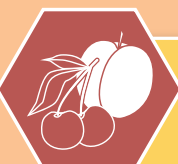
220



### Berries

The scent of berries such as blackberry, strawberry and raspberry.

221



### Rich berry scents

Intense berry scents such as plum and blackberry.

EO Davana, EO Buchu leaf, Blackcurrant bud absolute, Damascenone Total (Fir), Rhubofix (Fir) Damascone beta

222



### Fresh berry scents

Fresh berry scents such as strawberry and raspberry.

Aldehyde C16 strawberry, Dewberry PMF (Giv), Cassis base 345B (Fir), Raspberry ketone, Dewfruit TEC (Giv)

230



### Honey fruits

The scent of fruits such as peach and apricot.

FO Peach kiss, Aldehyde C14 peach, Nectarate (IFF), gamma Decalactone

240



### Tropical fruits

The scent of fruits such as mango, melon and pineapple.

FO Coconut, Ethyl butyrate, Methyl Laitone 10% in DPG (Giv), Aldehyde C18 coconut, Datilat (Fir) Allyl amyl glycolate, Isoamyl acetate (nat)



### 3 WOOD

300



#### Wood

The scent of wood, moss, resins and balms.

310



#### Cedar wood

The scent of cedar wood.

EO Cedarwood Virginia, Cedramber (IFF), Cedryl Acetate (IFF), Vertofix Coeur (IFF), Palisandin (Sym), Cedroxyde (Fir)

320



#### Vetiver

The scent of vetiver.

EO Vetiver Java, EO Vetiver Haiti (org), EO Vetiver Sri Lanka, Piconia (IFF), Vetiveryl Acetate Haiti

330



#### Sweet wood

The scent of vanilla, tonka, coconut, oud and amber.

331



#### Vanilla

The scent of vanilla.

FO Vanilla beans, FO Sun and flowers, Benzoë Siam res 50% in DPG, Benzoin Siam resinoid pure, Vanilla absolute, Tolu res type nat (Fir), Vanillin, Benzyl salicylate, Ethyl vanillin, Veratraldehyde, Heliotropex N (IFF), Vanillin 25% in DPG, Benzoin Sumatra resin, Opoponax gum resin, Propolis Benzoin Siam resin

332



#### Tonka

The scent of tonka beans and hay.

EO Guaiac wood, Coumarin, Benzaldehyde, Coumarin 10% in DPG, Methyl Cinnamate, Tonka beans Bicyclononolactone, gamma Octalactone

333



#### Animal wood scents

The scent of oud and other woody scents with animal aspects.

EO Myrrh, Oud (Firbest), Oud Maleki (Fir), Myrrh gum resin



### 3 WOOD

334



#### Amber

Amber scents such as Iso E Super.

Iso E Super (IFF), Kephalis (Giv), Bornafix (IFF), Timbersilk (IFF), Ambermax 10% in TEC (Giv), Hercolyn DW, Sylvamber (DRT), Ambrocenide (Sym) 10% DPG, Hydroxyambran

340



#### Green wood

The scent of mosses, resins like labdanum, patchouli.

341



#### Moss

The scent of oakmoss and treemoss.

Oakmoss absolute, Tree moss absolute 15% in IPM, Methyl atratate, Oak moss abs 5% in DPG, Oak moss cut

342



#### Spicy wood scents

The scent of patchouli.

EO Patchouli (org), Mahagonate (Sym), Clearwood (Fir), Patchouli leaf cut

343



#### Resin wood scents

The scent of resins such as galbanum and labdanum.

EO Galbanum, Labdanum resinoid pure, Labdanum res 45% in TEC, Galbex 183 (Fir)

344



#### Green wood scents

The scent of materials with green and wood elements, such as OTBCHA, PTBCHA.

PTBCHA, OTBCHA

350



#### Sandalwood

The scent of sandalwood.

EO Amyris, EO Sandalwood white, EO Sandalwood austrocaledonicum, Santaliff (IFF), EO Sandalwood spicatum, Ebanol (Giv), Bacdanol (IFF), Javanol (Giv), Norlimbanol (Fir), Wood Base Mysore (Fir), Sandalore (Giv), Dreamwood (Fir), Polysantol (Fir)





## 4 FRESH

400



### Fresh

The scent of the green parts of plants, citrus fruits, water and air.

410



### Fresh green

The scent of grass, herbs and conifers.

411



### Grass

The scent of grass.

cis-3-Hexenol, Undecavertol (Giv), cis-3-Hexenyl acetate, 2,6-Nonadien-1-al, Neononyl acetate (Sym)

412



### Aromatic herbs

The scent of culinary herbs such as rosemary, sage and thyme.

EO Peppermint (org), EO Rosemary CT cineol (org), EO Rosemary CT Camphor (org), EO Corn mint (org), EO Sage Dalmatia (org), EO Teatree (org), EO Armoise, EO Eucalyptus globulus (org), FO Green fig, CO<sub>2</sub> Chamomile flower, Menthol (nat), Terpinyl acetate, Herboxane (Giv), Birch Leaf Givco 166/2, Lime Leaves (IFF)

413



### Anisic spices

The scent of culinary herbs such as basil and tarragon.

EO Basil MC (org), Stemone (Giv), Triplal (IFF), Anethol (nat)

414



### Conifer

The warm green scent of conifer leaf, cypress and silver fir.

EO Cypress (org), EO Fir needle (org), EO Juniper berry (org), EO Pine needle (org), CO<sub>2</sub> Juniper berry, Bornyl acetate, Coniferan Pure (IFF)

420



### Citrus

The scent of citrus fruits.



## 4 FRESH

421



### Citrus fruits

The scent of citrus fruits such as lemon and orange.

EO Lemon CP (org), EO Orange sweet CP (org), EO Mandarine red (org), EO Bergamot FCF (org), EO Lime distilled, EO Grapefruit CP, EO Petitgrain mandarine, EO Petitgrain lemon (org), Elemi resinoid, Dihydromyrcenol, Limonene D- (nat), Octacetal (IFF), Methyl Pamplemousse (Giv)

422



### Citral

The scent of citral and essential oil with citral.

EO Lemongrass (org), EO Citronella Java (org), EO Litsea cubeba (org), FO Tea and melissa, Citral

423



### Fresh conifer

The citrus aspects of conifers.

Dihydroterpineol, Clonal (IFF)

430



### Marine

The scent of the sea and other water, air, ozone.

431



### Water

The scent of algae and watermelon.

FO Water and air 2, Seaweed (Fucus) absolute, Calone (Fir), Scentenal (Fir), Canthoxal (IFF), Ultrazur (Giv)

432



### Marine wood

Fragrances with wood and water aspects.

Aphermate (IFF)

433



### Ozone

Fragrances with a pungent ozone component.

Helional (IFF), Floralozone (IFF)





## 4 FRESH

440



### Aldehyde

The scent of linear aldehydes such as nonanal and decanal.

Aldehyde C12 Lauric, Rosalva (IFF), Aldehyde C11 undecylene, Aldehyde C12 MNA, Aldehyde C10, Aldehyde C10 10% in DPG, Aldehyde C9

## 5 ANIMALIC

500



### Animalic

The scent of the skin and excretions of animals, leather and tar.

510



### Musk

The scent of musk.

511



### Sweet musk

Musk with a mainly sweet scent.

EO Clary sage (org), FO Musk and incense, Galaxolide 50% in IPM (IFF), Tonalid, Cashmeran (IFF), Ethylene brassylate, Musk Ketone, Celestolide (IFF), Zenolide (IFF), Cashmeran Velvet (IFF), Ambrettolide, Habanolide Subst (Fir), Romandolide (Fir), Velvione (Giv), Helvetolide (Fir)

512



### Musk leather

Musk with a leathery scent.

CO2 Ambrette seeds, Macrolide Supra (Sym), Muscenone (Fir), omega Pentadecalactone, Ambrette seeds

520



### Phenol

The scent of tar.



## 5 ANIMALIC

521



**Tar**  
The scent of tar and castoreum.

EO Cade (org), EO Birch tar, Castoreum Synth (Fir), Guaiacol

522



**Cresyl**  
The scent of cresyl compounds.

para Cresyl acetate

530



**Excretion**  
The scent of poop.

Indole, Indole 10% in DPG, Civette Synth 10% in DPG, Civette Synth (Fir)

540



**Sweet and animal**  
The scent of leather, ambergris and honey.

541



**Sweet leather**  
The sweet aspects of the scent of leather.

FO Fresh leather, Safraline (Giv), Apo Patchone Coeur (IFF), Suederal LT (IFF), meta Cresol 1% in DPG, Isobutyl Quinoline (Sym)

542



**Ambergris**  
The animal aspects of ambergris.

FO Grey amber, Fixateur 505 E (Fir), Ambroxide (Sym), CetaloX (Fir)

543



**Animal honey**  
The animal aspects of honey.

Phenylethyl phenylacetate



## 6 SPICY

600



### Spicy

The scent of spices, tobacco and cocoa.

610



### Sweet and spicy

The scent of spices such as cloves, cinnamon and cardamom.

EO Cassia bark, EO Clove bud (org), EO Angelica root (org), EO Bay West Indies leaf, EO Cardamom, CO2 Cinnamon bark, Isoeugenol, Cinnamic aldehyde, Eugenol, Cinnamyl Acetate, Methyl isoeugenol, Benzyl isoeugenol

620



### Sharp

The scent of pepper.

EO Black pepper (org), EO Ginger root (org), EO Olibanum, EO Pink pepper (org), Frankincense resin, Frankincense res 50% in DPG

630



### Soft

The scent of nutmeg and mace.

EO Coriander seed (org), EO Nutmeg LoSaf

640



### Tobacco

The scent of dried tobacco.

EO Carrot seed, Bees wax absolute, Tobacco absolute, Ethyl safranate, Safranal

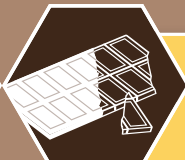
650



### Bittersweet

The scent of cocoa, chocolate, caramel.

651



### Chocolate

The scent of cocoa and chocolate.

FO Cocoa and choco, CO2 Cocoa bean, CO2 Coffee (org), Isobutyl phenyl acetate

652



### Caramel

The scent of caramel and burnt sugar.

Ethyl Maltol, Methyl Cyclopentenolone

